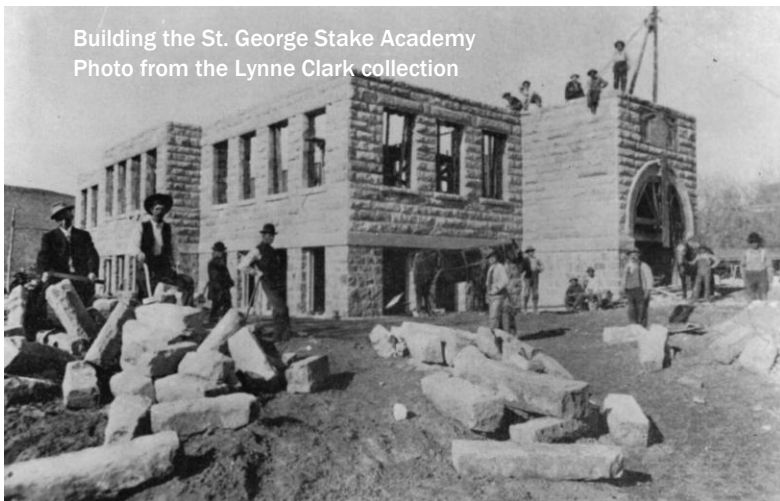


# BUILDING A COMMUNITY IN THE DESERT



The St. George Temple circa 1920  
Photo from the Lynne Clark collection



Building the St. George Stake Academy  
Photo from the Lynne Clark collection

It's hard to imagine the poverty of the faithful souls who chose to follow their prophet and come to what Parley P. Pratt had call a "cheerless...country in ruins". But it is even harder to grasp how willingly they united together in building a city with "towers, and steeples" as Brigham Young had prophesied.